

## School PTO & Administration SY 2007- 2008

Parent-Teacher Organization Officers	
Tino Conceicao	President
Joyce Peredo	Vice President
Joleen Nortman	Secretary
Frankie Lake	Treasurer
School Administration	
Derrick Santos	Principal
Elaine Ulloa	Assistant Principal

### P.L. 26-26 School Performance Grade Classification

#### School Year 2007-2008 School Performance

Based on Public Law 28-45

SAT10 Proficient & Advanced Levels	School Data	P.L. 26-26 Grade Classification
SAT10 Grade 1 - Reading	72%	Strong
SAT10 Grade 1 - Math	30%	Satisfactory
SAT10 Grade 1 - Language	9%	Unacceptable
SAT10 Grade 2 - Reading	24%	Low
SAT10 Grade 2 - Math	9%	Unacceptable
SAT10 Grade 2 - Language	0%	Unacceptable
SAT10 Grade 3 - Reading	16%	Low
SAT10 Grade 3 - Math	6%	Unacceptable
SAT10 Grade 3 - Language	10%	Low
SAT10 Grade 4 - Reading	26%	Low
SAT10 Grade 4 - Math	8%	Unacceptable
SAT10 Grade 4 - Language	20%	Low
SAT10 Grade 5 - Reading	11%	Low
SAT10 Grade 5 - Math	3%	Unacceptable
SAT10 Grade 5 - Language	4%	Unacceptable
School Passing Rate	100%	Exceptional
5th Grade Promotion Rate	100%	Exceptional
Student Attendance Rate	94%	Exceptional
Student Discipline Rate	0%	Exceptional
Employee Attendance Rate	93%	Satisfactory
School Improvement Plan	100%	
<b>COMPOSITE SCORE/GRADE</b>	<b>52%</b>	<b>Satisfactory</b>

## School Initiatives & Exemplary Programs That Impact Student Achievement

### SPECIAL PROGRAMS

- DEED Program
- Direct Instruction Reading, Language, Math
- Chamorro Cultural & Language Program (PL 21-34 Mandate)
- English as a Second Language (ESL) Program
- Special Education
- Gifted and Talented (GATE) Program
- Teacher Mentoring Program
- Head Start Program
- Summer Program 2007

### EXEMPLARY ACCOMPLISHMENTS

- SAT 10: Above the National—1st Grade Reading, Spelling  
Above the District - 1st Grade Math, Language, Environment, Listening  
Above the District - 2nd Grade Reading, Spelling  
Above the District - 4th Grade Reading, Language, Spelling, Science & Listening
- Accreditation was awarded for one year option.
  - FAST (Family and Schools Together Workshop)
  - SAFE Training
  - Autism Training
  - School Partnership with Department of Corrections
  - HATSA Mini-Grant

### EXTRA-CURRICULAR ACTIVITIES

- Focus Group meetings for accreditation
- Mini Staff Development Meetings
- In-Service Training
- Special Olympics
- Harvest Carnival
- 5K Run/Walk

### SPECIAL AWARDS

- Quarterly A/B Honor Roll
- Citizenship & Perfect Attendance

### WEEKLY SCHOOL NEWSLETTER

"Tottot Flyer"



## SCHOOL ANNUAL REPORT CARD SY 2007 - 2008

GUAM PUBLIC SCHOOL SYSTEM

# UPI ELEMENTARY SCHOOL

Telephone..... 653-1371/2, 633-1382/1374  
Fax..... 653-5305



### "HOME OF THE TOTTOTS"

Color: Green and Beige  
Located in Yigo, Guam

### MISSION:

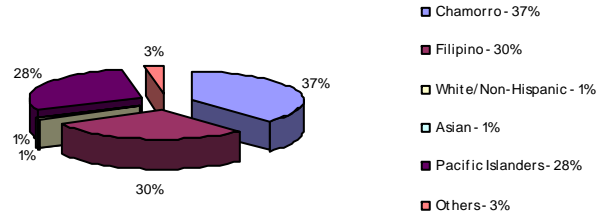
*"We the faculty, staff, and parents of Upi Elementary School are dedicated to ensure that all students learn academic and social skills, which will prepare them to be productive citizens of the community."*

### School Year 2007-2008 Student Enrollment by Grade

Grade Level	Enrollment	Percentage
1st Grade	127	19%
2nd Grade	116	18%
3rd Grade	128	20%
4th Grade	145	23%
5th Grade	126	20%
<b>Total:</b>	<b>642</b>	<b>100%</b>

### UPI ETHNIC DISTRIBUTION

Based on Average Daily Membership SY '07-08



### STUDENT ACHIEVEMENT

GUAM PUBLIC LAW 13-101. "The Board shall evaluate the efficiency of the instructional program in contributing to the achievement of the basic skills and shall continually revise both outcome statements and instructional procedures on the basis of evaluative data."

The GPSS Comprehensive Testing Program (CTP) is comprised of a variety of measures of student achievement including teacher-made tests, the Stanford Achievement Test (SAT10), and other standardized tests selected by the school. The SAT10 is administered district-wide to students enrolled in Grades 1-12. The graphs in the next section show SY 05-06 to SY 07-08 SAT10 results for reading, math, language, environment/science, and social science.

### SCORE DEFINITIONS

#### Advanced

Signifies **superior performance** beyond grade level mastery.

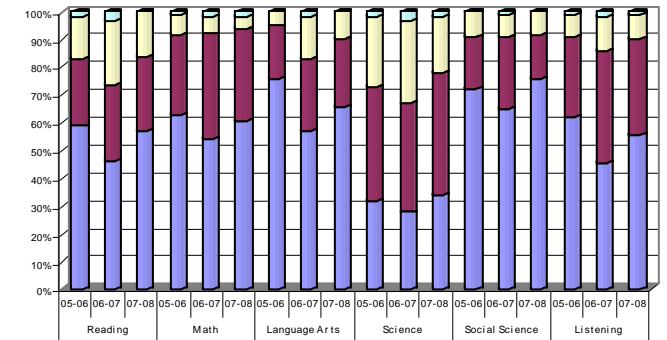
#### Proficient

Represents **solid academic performance**, indicating that students are prepared for the next grade.

#### Basic

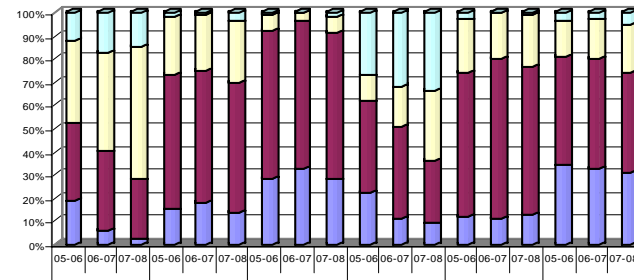
Indicates **partial mastery** of the knowledge and skills that are fundamental for satisfactory work.

### Performance Levels for Grade 3



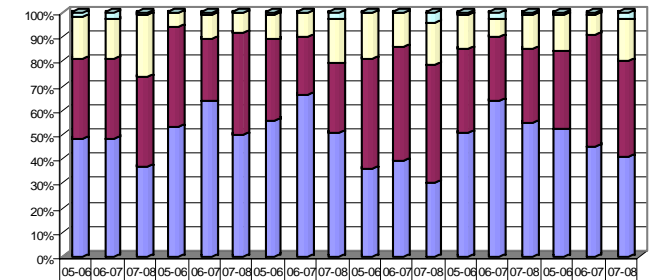
	Reading		Math		Language Arts		Science		Social Science		Listening							
Advance	2	3	0	1	2	2	0	2	3	2	0	1	2	1				
Proficient	15	23	16	7	6	4	5	15	10	9	8	8	8	12	9			
Basic	24	27	27	29	38	33	19	26	24	41	39	44	19	26	16	29	40	34
Below Basic	59	46	57	63	55	61	76	57	66	32	28	34	72	65	76	62	45	56

### Performance Levels - Grade 1



	Reading			Math			Language Arts			Spelling			Environment			Listening		
Advance	12	17	15	2	1	4	1	0	2	27	32	34	3	0	1	4	3	5
Proficient	36	43	57	25	24	26	7	4	7	11	17	30	23	20	22	15	17	21
Basic	33	34	26	58	58	56	63	63	63	39	40	27	62	70	64	47	47	43
Below Basic	19	6	2	15	18	14	28	33	28	22	11	9	12	11	13	34	33	31

### Performance Levels for Grade 4



	Reading		Math		Language Arts		Science		Social Science		Listening							
Advance	2	3	1	0	1	0	1	0	3	0	0	4	1	3	1	1	1	3
Proficient	17	16	25	6	10	8	10	10	18	19	14	17	14	7	14	15	8	17
Basic	33	33	37	41	26	42	33	24	28	45	47	48	35	26	30	32	46	39
Below Basic	48	49	37	53	64	50	55	66	51	36	39	30	51	64	55	52	45	41

### Average Daily Attendance Rate

Average Daily Attendance (ADA)	672.3
Average Daily Membership (ADM)	712.9
<b>Attendance Rate</b>	<b>94.3%</b>

### Student Participating in Free/Reduced Lunch

Free	474	90%
Reduced	54	10%
<b>Total</b>	<b>528</b>	<b>100%</b>

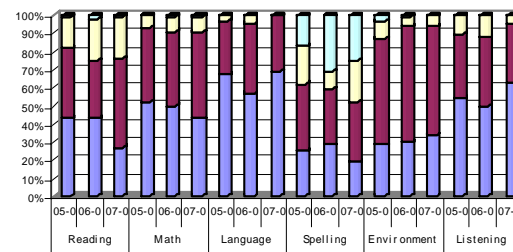
### Human Resources

Position	No. of Employees	% of Total	Attendance Rate	Absentee Rate
Principals and Assistants	2	2%	97%	3%
Teachers	58	67%	95%	5%
Professional/Ancillary	4	5%	66%	34%
Support	23	26%	90%	10%
<b>Total</b>	<b>87</b>	<b>100%</b>	<b>93%</b>	<b>7%</b>

### FY 2008 Actual Expenditures

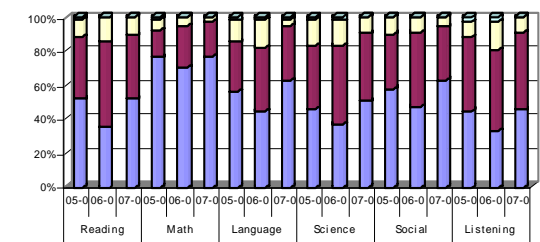
Category	Amount	Percent
Salaries and Benefits	3,429,457.64	90%
Contractual Services	102,625.34	3%
Supplies and Materials	10,265.46	0%
Equipment	0.00	0%
Utilities	264,606.48	7%
Capital Outlay	0.00	0%
<b>Total</b>	<b>\$3,806,954.92</b>	<b>100%</b>

### Performance Levels for Grade 2



	Reading		Math		Language Arts		Spelling		Environment		Listening							
Advance	1	2	1	0	1	1	0	0	17	31	25	3	1	0	0	0	0	
Proficient	17	23	23	7	8	8	3	4	0	21	10	23	10	5	6	10	12	5
Basic	39	32	49	40	41	48	30	39	31	37	31	33	59	64	60	36	38	33
Below Basic	43	43	27	52	50	43	68	57	69	25	29	19	29	30	34	54	50	63

### Performance Levels for Grade 5



	Reading		Math		Language Arts		Science		Social Science		Listening							
Advance	1	0	0	1	0	0	2	1	1	2	0	0	0	0	3	3	0	
Proficient	11	15	11	7	5	3	13	17	4	16	15	10	10	9	6	9	16	9
Basic	37	50	38	16	25	20	29	37	33	37	47	40	32	44	31	43	48	45
Below Basic	52	35	52	76	70	77	56	45	63	46	37	51	57	47	63	45	33	45