

School PTO & Administration SY 2007 - 2008

Parent-Teacher Organization Officers		
Edna Topasna		President
Joyce Sayama		Vice President
Mia Barrientos		Secretary
Andrew Chargualaf		Treasurer
School Administration		
Jeanette M. Burch		Principal
Tarsila Muth		Assistant Principal

School Initiatives & Exemplary Programs That Impact Student Achievement

SPECIAL PROGRAMS

- DEED
- Corrective Reading Program - Direct Instruction
- ESL Program
- Chamorro Program (PL 21-34 mandate)
- Special Education
- GATE Program
- Head Start
- Teacher Mentoring Program
- Pre-School Program
- Emotionally Disabled and Deaf and Hard of Hearing Program
- Summer Program 2007

EXEMPLARY ACCOMPLISHMENTS

- Increase in School Performance Composite Score (2%-pts)
- SAT 10: Scored above the 50th National Percentile Ranking for
Grade 1 - Reading and Spelling Grade 2, 3, 5 - Spelling
- SAT 10: Scored at or above the district (NPR)
Grade 1 - Reading, Math, Language, Spelling, Environment, Listening
Grade 2 - Reading, Math, Language, Spelling, Environment, Listening
Grade 3 - Reading, Math, Language, Spelling, Science, Soc Sci, Listening
Grade 4 - Reading, Language, Science, Social Science, Listening
Grade 5 - Reading, Math, Language, Spelling, Science, Soc Sci, Listening
- Parent Fair
- After School Music and Art Program
- Satellite Perfect Attendance Monitoring Program (SPAM)
- School Newsletter

EXTRA-CURRICULAR ACTIVITIES

- Literary Fresh Produce Contest
- Celebrity Readers Visits
- Rainbows for all Children
- Moving on Up Incentive Program
- Bullying Awareness Sessions
- Morning Exercises
- GATE Day
- Safety Patrol
- Chamorro Month Festivities
- Spelling Bee & Math Olympiad

SPECIAL AWARDS

- SAT 10 - students scoring at 90 NPR
- Spelling Bee & Math Olympiad participation
- Parents/Faculty Staff - Outstanding Support
- Promotional Exercises - K & 5th
- Annual End-of-Year Awards Ceremony

SCHOOL ANNUAL REPORT CARD SY 2007 - 2008

GUAM PUBLIC SCHOOL SYSTEM
P.C. LUJAN
ELEMENTARY SCHOOL
Accredited by the Western Association of Schools and Colleges
Accreditation expires: June 30, 2008

Telephone..... 734-3971/2/4181/7471
Fax..... 734-7472



“HOME OF THE SATELLITES”

Color: Green and Gold
Located in Barrigada, Guam

MISSION

“The students, parents, staff, and community of Pedro C. Lujan Elementary are working partners in providing a nurturing child-friendly environment and the best education possible to ensure success for ALL children.”



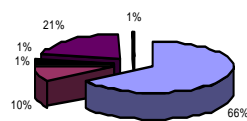
P.L. 26-26 School Performance Grade Classification		
School Year 2007-2008 School Performance		
<i>Based on Public Law 28-45</i>		
SAT10 Proficient & Advanced Levels	School Data	P.L. 26-26 Grade Classification
SAT10 Grade 1 - Reading	64%	Satisfactory
SAT10 Grade 1 - Math	15%	Low
SAT10 Grade 1 - Language	9%	Unacceptable
SAT10 Grade 2 - Reading	34%	Low
SAT10 Grade 2 - Math	13%	Low
SAT10 Grade 2 - Language	11%	Low
SAT10 Grade 3 - Reading	23%	Low
SAT10 Grade 3 - Math	18%	Low
SAT10 Grade 3 - Language	18%	Low
SAT10 Grade 4 - Reading	36%	Low
SAT10 Grade 4 - Math	29%	Low
SAT10 Grade 4 - Language	33%	Low
SAT10 Grade 5 - Reading	11%	Low
SAT10 Grade 5 - Math	8%	Unacceptable
SAT10 Grade 5 - Language	14%	Low
School Passing Rate	100%	Exceptional
5th Grade Promotion Rate	100%	Exceptional
Student Attendance Rate	94%	Exceptional
Student Discipline Rate	0%	Exceptional
Employee Attendance Rate	93%	Satisfactory
School Improvement Plan	100%	
COMPOSITE SCORE/GRADE	57%	Satisfactory

School Year 2007-2008 Student Enrollment by Grade

Grade Level	Enrollment	Percentage
1st Grade	85	20%
2nd Grade	81	19%
3rd Grade	96	22%
4th Grade	89	21%
5th Grade	76	18%
Total:	427	100%

PC LUJAN ETHNIC DISTRIBUTION

Based on Average Daily Membership SY'07-'08



- Chamorro-66%
- Filipino-10%
- White/ Non-Hispanic-1%
- Asian-1%
- Pacific Islanders -21%
- Others-1%

STUDENT ACHIEVEMENT

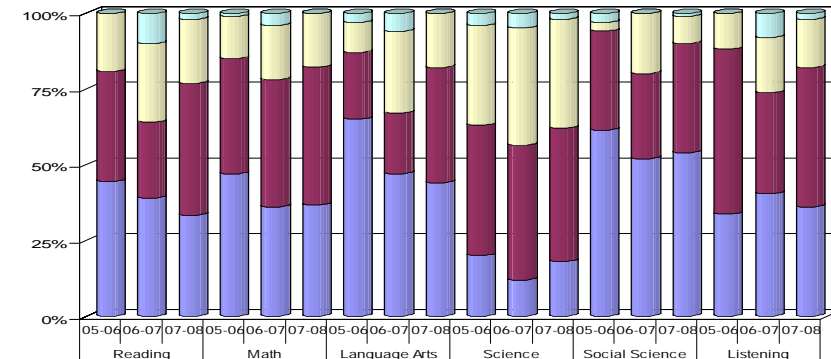
GUAM PUBLIC LAW 13-101. "The Board shall evaluate the efficiency of the instructional program in contributing to the achievement of the basic skills and shall continually revise both outcome statements and instructional procedures on the basis of evaluative data."

The GPSS Comprehensive Testing Program (CTP) is comprised of a variety of measures of student achievement including teacher-made tests, the Stanford Achievement Test (SAT10), and other standardized tests selected by the school. The SAT10 is administered district-wide to students enrolled in Grades 1-12. The graphs in the next section show SY 05-06 to SY 07-08 SAT10 results for reading, math, language, environment/science, and social science.

SCORE DEFINITIONS

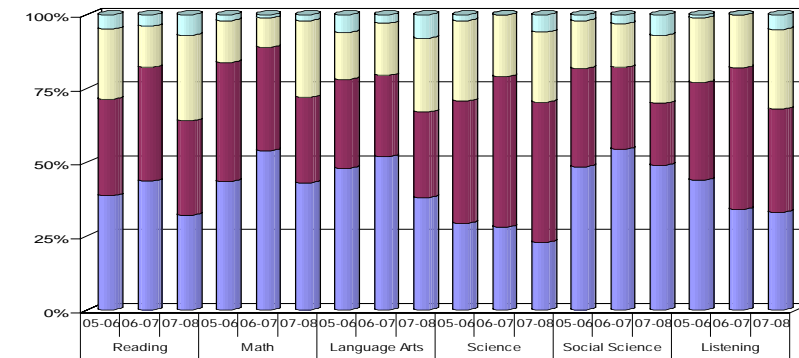
- Advanced** Signifies **superior performance** beyond grade level mastery.
- Proficient** Represents **solid academic performance**, indicating that students are prepared for the next grade.
- Basic** Indicates **partial mastery** of the knowledge and skills that are fundamental for satisfactory work.
- Below Basic** Indicates **little or no mastery** of fundamental knowledge and skills.

Performance Levels for 3rd Grade



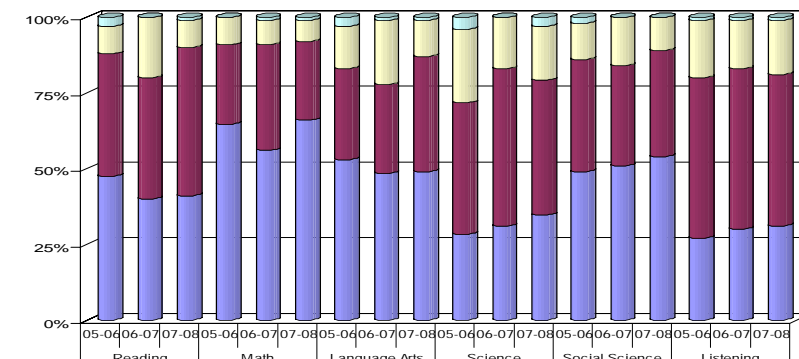
	Reading		Math		Language Arts		Science		Social Science		Listening							
Advance	0	10	2	1	4	0	3	6	0	4	5	2	3	0	1	0	8	2
Proficient	19	26	21	14	18	18	10	27	18	33	39	36	3	20	9	12	18	16
Basic	36	25	43	38	42	46	22	20	38	43	45	44	33	28	36	55	33	46
Below Basic	44	39	33	47	36	37	65	47	44	20	12	18	62	52	54	34	40	36

Performance Levels for 4th Grade



	Reading		Math		Language Arts		Science		Social Science		Listening							
Advance	5	4	7	2	1	2	6	3	8	2	0	6	2	3	7	1	0	5
Proficient	24	14	29	14	10	26	16	18	25	27	21	24	16	15	23	22	18	27
Basic	33	39	32	40	35	29	30	28	29	41	51	48	33	28	21	33	48	35
Below Basic	39	44	32	43	54	43	48	53	38	29	28	23	48	55	49	44	34	33

Performance Levels for 5th Grade



	Reading		Math		Language Arts		Science		Social Science		Listening							
Advance	3	0	1	0	1	1	3	1	1	4	0	3	2	0	0	1	1	1
Proficient	9	20	9	9	8	7	14	21	12	24	17	18	12	16	11	19	16	18
Basic	40	40	49	26	35	26	30	29	38	43	52	45	37	33	35	53	53	50
Below Basic	47	40	41	64	56	66	53	48	49	28	31	35	49	51	54	27	30	31

Average Daily Attendance Rate

Average Daily Attendance (ADA)	407.4
Average Daily Membership (ADM)	499.8
Attendance Rate	94%

Student Participating in Free/Reduced Lunch

Based on October 2007 Data from Food & Nutrition Services

Free	273	54%
Reduced	32	6%
Total	305	60%

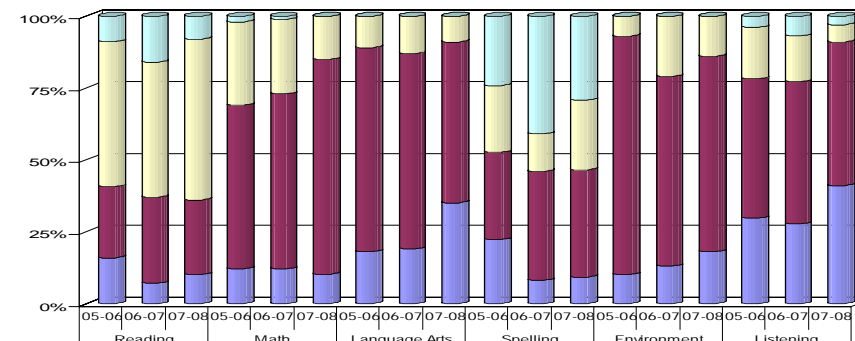
Human Resources

Position	No. of Employees	% of Total	Attendance Rate	Absentee Rate
Principals and Assistants	2	2%	98%	2%
Teachers	52	62%	95%	5%
Professional/Ancillary	3	4%	97%	3%
Support	27	32%	90%	10%
Total	84	100%	93%	7%

FY 2008 Actual Expenditures

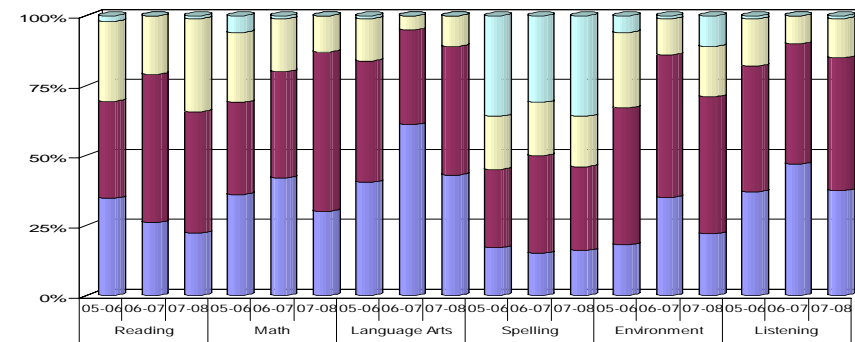
Category	Amount	Percent
Salaries and Benefits	2,748,203.18	88%
Contractual Services	83,003.11	3%
Supplies and Materials	4,528.79	0%
Equipment	0.00	0%
Utilities	270,882.11	9%
Capital Outlay	0.00	0%
Total	\$3,106,617.19	100%

Performance Levels for 1st Grade



	Reading		Math		Language Arts		Spelling		Environment		Listening							
Advance	9	16	8	2	1	0	0	24	41	29	0	4	7	3				
Proficient	51	47	56	29	26	15	11	13	9	23	13	24	7	21	14	18	16	6
Basic	25	30	26	57	61	74	71	68	56	30	38	37	83	66	68	49	50	50
Below Basic	16	7	10	12	12	10	18	19	35	22	8	9	10	13	18	30	28	41

Performance Levels for 2nd Grade



	Reading		Math		Language Arts		Spelling		Environment		Listening							
Advance	2	0	1	6	1	0	1	0	0	36	31	36	6	1	11	1	0	1
Proficient	29	21	33	25	19	13	15	5	11	19	19	18	27	13	18	17	10	14
Basic	35	53	43	33	38	57	43	34	46	28	35	30	49	51	49	45	43	47
Below Basic	35	26	22	36	42	30	40	61	43	17	15	16	18	35	22	37	47	37