

School PTO & Administration SY 2007 - 2008

Parent-Teacher Organization Officers	
Angelica Perez	President
Rita Salisbury	Vice President
Christina Noket	Secretary
Shannon Quenga	Treasurer
Zenia Duenas	PIO
Michelle Santos	Teacher Rep.
Ronald Pangelinan	Teacher Rep.
School Administration	
Daisy G. Ramirez	Principal
Erica Sudo Cepeda	Assistant Principal

P.L. 26-26 School Performance Grade Classification

School Year 2007-2008 School Performance

Based on Public Law 28-45

SAT10 Proficient & Advanced Levels	School Data	P.L. 26-26 Grade Classification
SAT10 Grade 1 - Reading	59%	Satisfactory
SAT10 Grade 1 - Math	26%	Low
SAT10 Grade 1 - Language	7%	Unacceptable
SAT10 Grade 2 - Reading	20%	Low
SAT10 Grade 2 - Math	12%	Low
SAT10 Grade 2 - Language	3%	Unacceptable
SAT10 Grade 3 - Reading	17%	Low
SAT10 Grade 3 - Math	5%	Unacceptable
SAT10 Grade 3 - Language	12%	Low
SAT10 Grade 4 - Reading	20%	Low
SAT10 Grade 4 - Math	15%	Low
SAT10 Grade 4 - Language	18%	Low
SAT10 Grade 5 - Reading	10%	Low
SAT10 Grade 5 - Math	2%	Unacceptable
SAT10 Grade 5 - Language	10%	Low
School Passing Rate	100%	Exceptional
5th Grade Promotion Rate	100%	Exceptional
Student Attendance Rate	96%	Exceptional
Student Discipline Rate	0%	Exceptional
Employee Attendance Rate	89%	Low
School Improvement Plan	100%	
COMPOSITE SCORE/GRADE	52%	Satisfactory

School Initiatives & Exemplary Programs That Impact Student Achievement

SPECIAL PROGRAMS

- DEED
- DI Programs: Reading, Language and Mathematics
- ESL Program
- Special Education
- GATE Program
- Pre-Gate
- Chamorro Program
- Head Start
- Project HATSA Teacher Mentoring
- Project HATSA Staff Development
- Project HATSA Technology
- Summer School Program at Talofofu Elementary School

EXEMPLARY ACCOMPLISHMENTS

- SAT10
- School partnership with Community and Government agencies (Guam Customs and Quarantine, Yona's Mayor's Office, and Mr. Manuel U.Lujan Family)
- HATSA Mini-Grant (Renaissance Responders)
- Script Howard Spelling Bee Participation
- Isla-Art-a-Thon Participation
- IRA Read-a-Thon Participation
- Science Fair Participation
- Cultural Exchange with Japanese Student Teachers and Students
- Saturday Scholars program with UOG Student Teachers

EXTRA-CURRICULAR ACTIVITIES

- Family Labor Day with Guam Customs & Quarantine
- M.U. Lujan Memorial Day
- Service Learning
- Service Learning Club
- Youth Crime Watch
- Junior Police Cadets (JPC)
- 5th Grade Student Council

SCHOOL ANNUAL REPORT CARD SY 2007 - 2008

GUAM PUBLIC SCHOOL SYSTEM **M.U. LUJAN** ELEMENTARY SCHOOL

Telephone..... 789-1535/1601
Fax..... 789-1686



“HOME OF THE DRAGONS”

Color: Blue and Gold
Located in Yona, Guam

MISSION:

“To promote and provide academic excellence for all students to be lifelong learners and productive citizens by fostering a conducive and nurturing environment with total community partnership.”



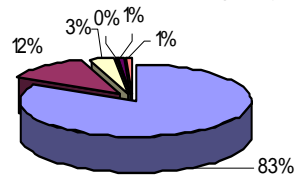
School Year 2007-2008 Student Enrollment by Grade

Based on September 30, 2007 Official Student Enrollment

Grade Level	Enrollment	Percentage
Kindergarten	98	15%
1st Grade	116	17%
2nd Grade	107	16%
3rd Grade	109	16%
4th Grade	129	19%
5th Grade	113	17%
Total:	672	100%

M. U. Lujan Elementary School Ethnic Distribution

Based on Average Daily Membership SY 07-08



- Chamorro - 83%
- Pacific Islander - 12%
- Filipino - 3%
- Asian - 0%
- White/Non-Hispanic - 3%
- Other - 1%

Average Daily Attendance Rate

Average Daily Attendance (ADA)	666.3
Average Daily Membership (ADM)	694.7
Attendance Rate	96%

Student Participating in Free/Reduced Lunch

Based on October 2007 Data from Free & Nutrition Services

Free	422	60%
Reduced	53	8%
Total	475	68%

Human Resources

Position	No. of Employees	% of Total	Attendance Rate	Absentee Rate
Principals and Assistants	2	2%	97%	3%
Teachers	61	74%	89%	11%
Professional/Ancillary	3	4%	89%	11%
Support	16	20%	84%	16%
Total	82	100%	89%	11%

FY 2008 Actual Expenditures

Category	Amount	Percent
Salaries and Benefits	3,319,544.28	91%
Contractual Services	93,955.73	3%
Supplies and Materials	10,407.19	0%
Equipment	0.00	0%
Utilities	240,264.21	7%
Capital Outlay	0.00	0%
Total	\$3,664,171.41	100%

STUDENT ACHIEVEMENT

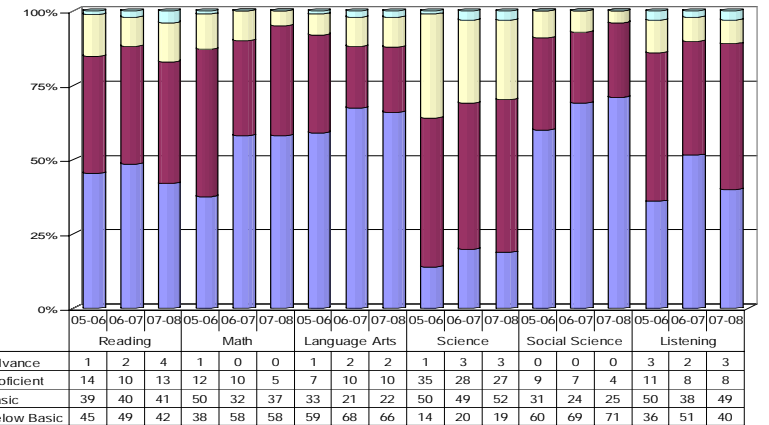
GUAM PUBLIC LAW 13-101. "The Board shall evaluate the efficiency of the instructional program in contributing to the achievement of the basic skills and shall continually revise both outcome statements and instructional procedures on the basis of evaluative data."

The GPSS Comprehensive Testing Program (CTP) is comprised of a variety of measures of student achievement including teacher-made tests, the Stanford Achievement Test (SAT10), and other standardized tests selected by the school. The SAT10 is administered district-wide to students enrolled in Grades 1-12. The graphs in the next section show SY 05-06 to SY 07-08 SAT10 results for reading, math, language, environment/science, and social science.

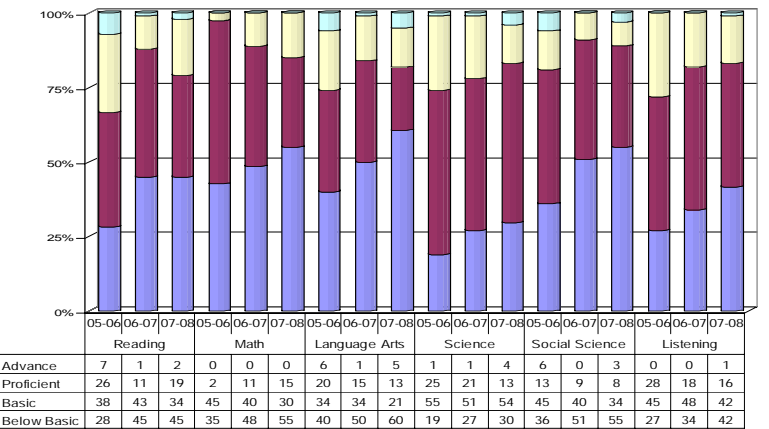
SCORE DEFINITIONS

- Advanced** Signifies **superior performance** beyond grade level mastery.
- Proficient** Represents **solid academic performance**, indicating that students are prepared for the next grade.
- Basic** Indicates **partial mastery** of the knowledge and skills that are fundamental for satisfactory work.
- Below Basic** Indicates **little or no mastery** of fundamental knowledge and skills.

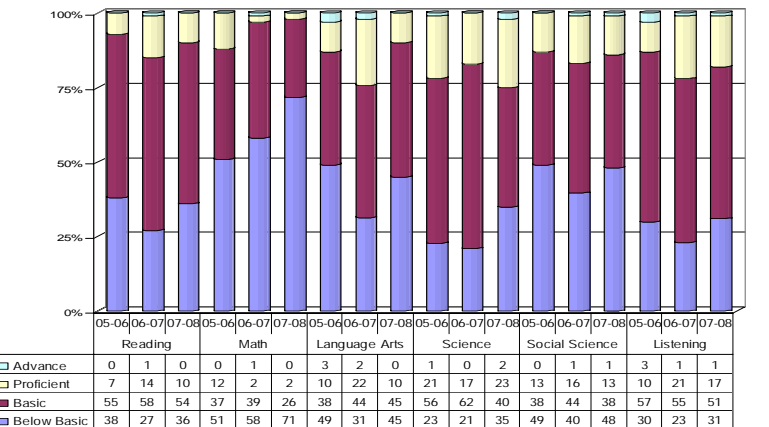
Performance Levels - Grade 3



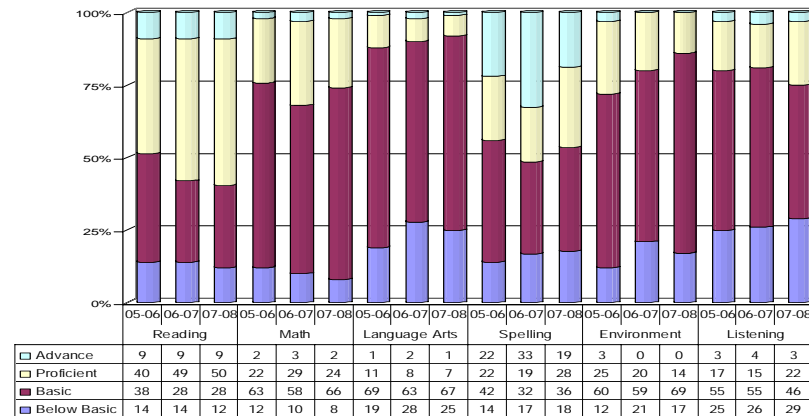
Performance Levels - Grade 4



Performance Levels - Grade 5



Performance Levels - Grade 1



Performance Levels - Grade 2

