

School PTO & Administration SY 2007 - 2008

Parent-Teacher Organization Officers

Mary Taimanglo	President
Remedios Taitague	Vice President
Elizabeth Quinene	Secretary
Denise Rosario	Treasure
Selma Paulino/Jackysha Green	Teacher Liaison

School Administration

Evelyn Mantanona	Principal
------------------	-----------

P.L. 26-26 School Performance Grade Classification

School Year 2007-2008 School Performance

Based on Public Law 28-45

SAT10 Proficient & Advanced Levels	School Data	P.L. 26-26 Grade Classification
SAT10 Grade 1 - Reading	60%	Satisfactory
SAT10 Grade 1 - Math	43%	Low
SAT10 Grade 1 - Language	19%	Low
SAT10 Grade 2 - Reading	10%	Low
SAT10 Grade 2 - Math	10%	Low
SAT10 Grade 2 - Language	2%	Unacceptable
SAT10 Grade 3 - Reading	22%	Low
SAT10 Grade 3 - Math	15%	Low
SAT10 Grade 3 - Language	13%	Low
SAT10 Grade 4 - Reading	18%	Low
SAT10 Grade 4 - Math	16%	Low
SAT10 Grade 4 - Language	14%	Low
SAT10 Grade 5 - Reading	11%	Low
SAT10 Grade 5 - Math	6%	Unacceptable
SAT10 Grade 5 - Language	17%	Low
School Passing Rate	100%	Exceptional
5th Grade Promotion Rate	100%	Exceptional
Student Attendance Rate	95%	Exceptional
Student Discipline Rate	0%	Exceptional
Employee Attendance Rate	90%	Satisfactory
School Improvement Plan	100%	
COMPOSITE SCORE/GRADE	53%	Satisfactory

School Initiatives & Exemplary Programs That Impact Student Achievement

SPECIAL PROGRAMS

- Direct Instruction Program (K-5 Reading, Math and Language Arts)
- Head Start Program
- Grade Level Planning for Instruction
- Math Problem Solving Using Renaissance Responders
- Technology Classes
- Faculty Development (monthly)
- Leaders and Educators Academy
- National Staff Development Council
- Teacher Mentoring Council

EXEMPLARY ACCOMPLISHMENTS

- Accredited by Western Association of Schools
- HATSA Mini-Grant (Teacher Enhancement & Technology)
- Certified Teacher in Every Classroom

EXTRA-CURRICULAR ACTIVITIES

- Christmas Program
- Chamoru Program
- Box Tops for Education for PE Equipment
- Youth Crime Watch
- Special Story Time with guest readers
- Japanese Cultural exchange - 3rd grade
- Water Safety Presentations (3rd - 5th)
- SAT10 Item Analysis and Alignment
- Monthly Newsletter
- Parent Teacher Organization
- School Wide End of Year Fieldtrip
- Script Howard Bee Competition
- IRA Read-a-thon
- Isla Art-a-thon Participation

SPECIAL AWARDS

- Kindergarten Promotional
- 5th Grade Promotional
- Presidential Award
- 5 Scholarships to Mount Carmel School



SCHOOL ANNUAL REPORT CARD SY 2007- 2008

GUAM PUBLIC SCHOOL SYSTEM **INARAJAN** ELEMENTARY SCHOOL

Telephone..... 828-8641/2
Fax..... 828-2606



“HOME OF THE CHIEFS”

Color: Black & Blue
Located in Inarajan, Guam

MISSION:

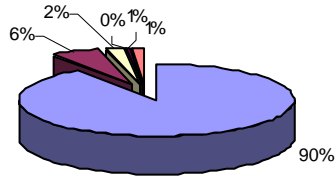
“To build an educational foundation for the development of the whole child as a life long learner”

School Year 2007-2008 Student Enrollment by Grade

Based on September 30, 2007 Official Student Enrollment

Grade Level	Enrollment	Percentage
Kindergarten	43	15%
1st Grade	46	16%
2nd Grade	51	18%
3rd Grade	46	16%
4th Grade	51	17%
5th Grade	53	18%
Total:	290	100%

Inarajan Elementary School Ethnic Distribution Based on Average Daily Membership SY 07-08



- Chamorro - 90%
- Pacific Islander - 6%
- Filipino - 2%
- Asian - 0%
- White/Non-Hispanic - 1%
- Other - 1%

Average Daily Attendance Rate

Average Daily Attendance (ADA)	275.3
Average Daily Membership (ADM)	290.9
Attendance Rate	95%

Student Participating in Free/Reduced Lunch

Based on October 2007 Data from Food & Nutrition Services

Free	190	65%
Reduced	24	8%
Total	214	73%

Human Resources

Position	No. of Employees	% of Total	Attendance Rate	Absentee Rate
Principals	2	5%	92%	8%
Teachers	21	55%	94%	6%
Professional/Ancillary	4	11%	91%	9%
Support	11	29%	81%	19%
Total	38	100%	90%	10%

FY 2008 Actual Expenditures

Category	Amount	Percent
Salaries and Benefits	1,771,292.77	90%
Contractual Services	30,137.36	2%
Supplies and Materials	3,764.99	0%
Equipment	0.00	0%
Utilities	159,681.78	8%
Capital Outlay	0.00	0%
Total	\$1,964,876.90	100%

STUDENT ACHIEVEMENT

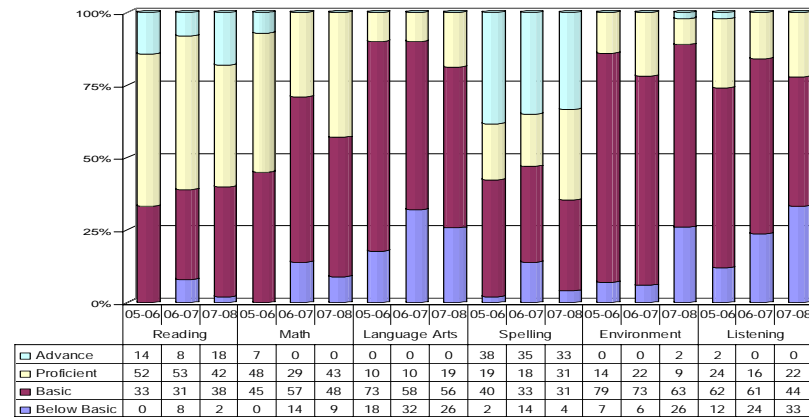
GUAM PUBLIC LAW 13-101. "The Board shall evaluate the efficiency of the instructional program in contributing to the achievement of the basic skills and shall continually revise both outcome statements and instructional procedures on the basis of evaluative data."

The GPSS Comprehensive Testing Program (CTP) is comprised of a variety of measures of student achievement including teacher-made tests, the Stanford Achievement Test (SAT10), and other standardized tests selected by the school. The SAT10 is administered district-wide to students enrolled in Grades 1-12. The graphs in the next section show SY 05-06 to SY 07-08 SAT10 results for reading, math, language, environment/science, and social science.

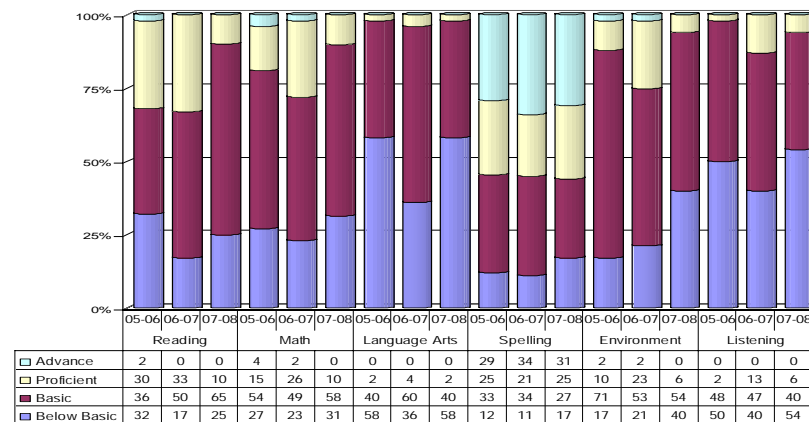
SCORE DEFINITIONS

Advanced	Signifies superior performance beyond grade level mastery.
Proficient	Represents solid academic performance , indicating that students are prepared for the next grade.
Basic	Indicates partial mastery of the knowledge and skills that are fundamental for satisfactory work.
Below Basic	Indicates little or no mastery of fundamental knowledge and skills.

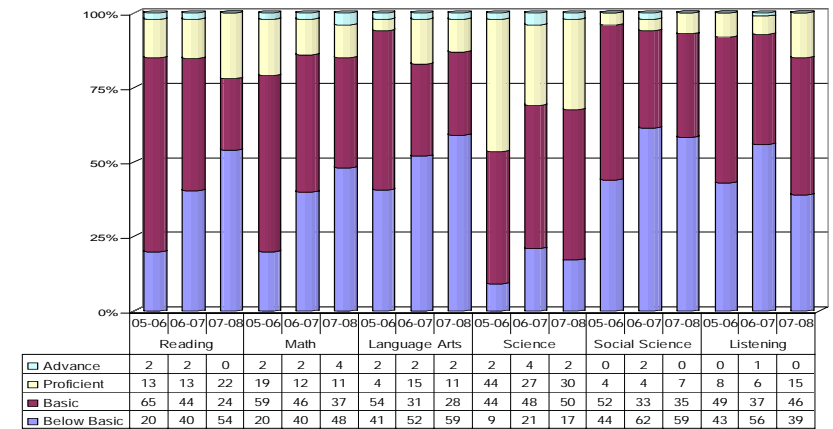
Performance Levels - Grade 1



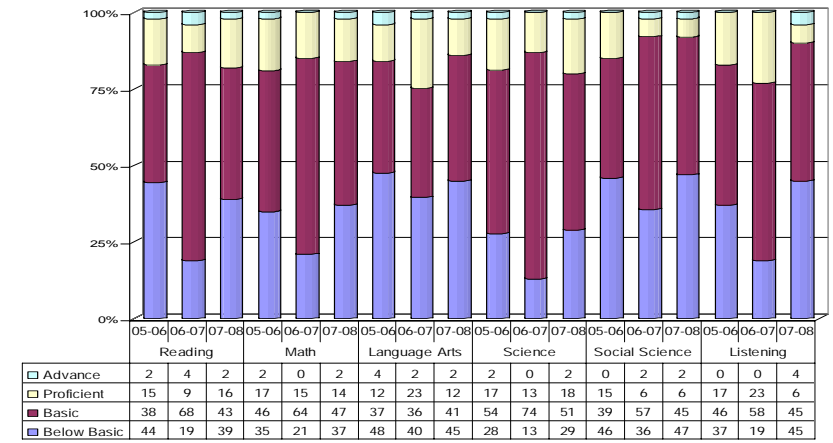
Performance Levels - Grade 2



Performance Levels - Grade 3



Performance Levels - Grade 4



Performance Levels - Grade 5

