

School PTO & Administration SY 2007 - 2008

Parent-Teacher Organization Officers	
John C. Flores	President
Hank Rice	Vice President
Valerie Mendiola	Secretary
Lisa Goodwin	Treasurer
Stephanie Cruz	PRO
Maxine S.N. Quintanilla	School Aide Rep
Cheryl Platon	Teacher Rep
School Administration	
Elizabeth A.T. Hanzsek, M.ED	Principal
Darlene Taimanglo	Assistant Principal

P.L. 26-26 School Performance Grade Classification		
School Year 2007-2008 School Performance		
<i>Based on Public Law 28-45</i>		
SAT10 Proficient & Advanced Levels	School Data	P.L. 26-26 Grade Classification
SAT10 Grade 1 - Reading	50%	Satisfactory
SAT10 Grade 1 - Math	25%	Low
SAT10 Grade 1 - Language	5%	Unacceptable
SAT10 Grade 2 - Reading	20%	Low
SAT10 Grade 2 - Math	12%	Low
SAT10 Grade 2 - Language	3%	Unacceptable
SAT10 Grade 3 - Reading	14%	Low
SAT10 Grade 3 - Math	9%	Unacceptable
SAT10 Grade 3 - Language	7%	Unacceptable
SAT10 Grade 4 - Reading	16%	Low
SAT10 Grade 4 - Math	7%	Unacceptable
SAT10 Grade 4 - Language	12%	Low
SAT10 Grade 5 - Reading	6%	Unacceptable
SAT10 Grade 5 - Math	2%	Unacceptable
SAT10 Grade 5 - Language	9%	Unacceptable
School Passing Rate	100%	Exceptional
5th Grade Promotion Rate	100%	Exceptional
Student Attendance Rate	93%	Exceptional
Student Discipline Rate	0%	Exceptional
Employee Attendance Rate	93%	Satisfactory
School Improvement Plan	100%	
COMPOSITE SCORE/GRADE	50%	Satisfactory

School Initiatives & Exemplary Programs That Impact Student Achievement

SPECIAL PROGRAMS

- DEED
- Chamorro Language Program (PL21-34 mandate)
- Corrective Reading Program - Direct Instruction
- English as a Second Language (ESL) Program
- GATE Program
- Pre-GATE Program
- Character Education Program
- Project HATSA Professional Development
- Project HATSA Teacher Mentoring Program
- Project HATSA Content Standards Alignment
- Project HATSA Technology Grant

EXEMPLARY ACCOMPLISHMENTS

- Environment Awareness Workshops
- Guam Fire Department Presentation
- Guam Symphony Presentation
- Parent Mini Workshops
- Quarterly In-Service Training
- Implementation of Positive Behavior Support System
- Monthly Newsletters
- Monthly Beautification Projects

EXTRA-CURRICULAR ACTIVITIES

- IRA Read-a-Thon
- Chamoru Chant Group
- PDN Newspapers in Education
- Student Assemblies (Safety, Self-Esteem)
- Community Involvement (military, government, private agencies)
- Parent Teacher Organization
- Spelling Bee
- Special Olympics
- Box Tops for Education
- I Recycle Program

SPECIAL AWARDS

- Quarterly Honor Roll (Citizenship, Perfect Attendance)
- 1st Place: Island-wide IRA
- 1st Place: Chamorro Cooking Competition
- Top 10 — I Recycle Program

MONTHLY SCHOOL NEWSLETTER

"Fanihi Newsletter"



SCHOOL ANNUAL REPORT CARD SY 2007 - 2008

GUAM PUBLIC SCHOOL SYSTEM **D.L. PEREZ** **ELEMENTARY SCHOOL**

Telephone..... 653-2177/2646/2632
Fax..... 653-2400



“HOME OF THE FRIENDLY FANIHI”

Color: Green & Gold
Located in Yigo, Guam

MISSION

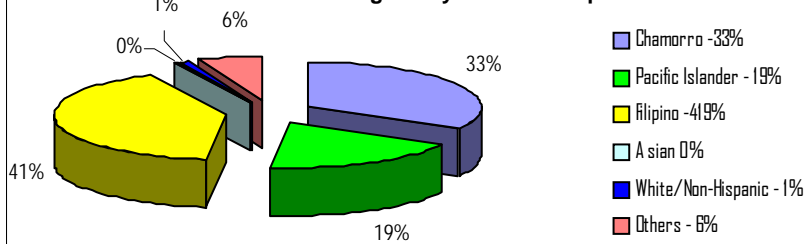
“To ensure all ALL students develop the skills, demonstrate the knowledge, and display the attitudes necessary for them to succeed in an every changing world.”

School Year 2007-2008 Student Enrollment by Grade

Grade Level	Enrollment	Percentage
1st Grade	142	18%
2nd Grade	149	19%
3rd Grade	184	23%
4th Grade	177	22%
5th Grade	148	19%
Total:	800	100%

D.L. Perez ES Ethnic Distribution

Based on Average Daily Membership SY 07-08



Average Daily Attendance Rate

Average Daily Attendance (ADA)	877.5
Average Daily Membership (ADM)	943.6
Attendance Rate	93.0%

Students Participating in Free/Reduced Lunch

Based on October 2007 data from Food and Nutrition Services

Free	540	58%
Reduced	101	11%
Total	641	69%

Human Resources

(Based on Data from FSAIS on September 2008)

Position	No. of Employees	% of Total	Attendance Rate	Absentee Rate
Principals and Assistants	1	2%	97%	3%
Teachers	70	67%	95%	5%
Professional/Ancillary	2	2%	86%	14%
Support	27	30%	86%	14%
Total	100	100%	93%	7%

FY 2008 Actual Expenditures

Category	Amount	Percent
Salaries and Benefits	4,031,021.29	89%
Contractual Services	93,807.06	3%
Supplies and Materials	7,136.15	0%
Equipment	0.00	0%
Utilities	377,088.23	8%
Capital Outlay	0.00	0%
Total	\$4,509,052.73	100%

STUDENT ACHIEVEMENT

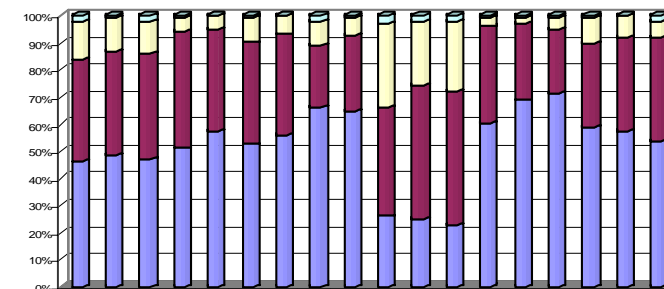
GUAM PUBLIC LAW 13-101. "The Board shall evaluate the efficiency of the instructional program in contributing to the achievement of the basic skills and shall continually revise both outcome statements and instructional procedures on the basis of evaluative data."

The GPSS Comprehensive Testing Program (CTP) is comprised of a variety of measures of student achievement including teacher-made tests, the Stanford Achievement Test (SAT10), and other standardized tests selected by the school. The SAT10 is administered district-wide to students enrolled in Grades 1-12. The graphs in the next section show SY 05-06 to SY 07-08 SAT 10 results for reading, math, language, environment/science, and social science.

SCORE DEFINITIONS

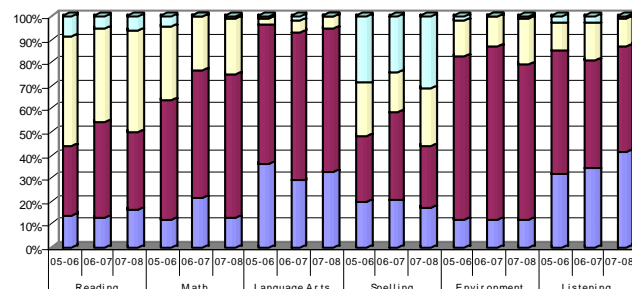
Advanced	Signifies superior performance beyond grade level mastery.
Proficient	Represents solid academic performance , indicating that students are prepared for the next grade.
Basic	Indicates partial mastery of the knowledge and skills that are fundamental for satisfactory work.
Below Basic	Indicates little or no mastery of fundamental knowledge and skills.

Performance Levels for Grade 3



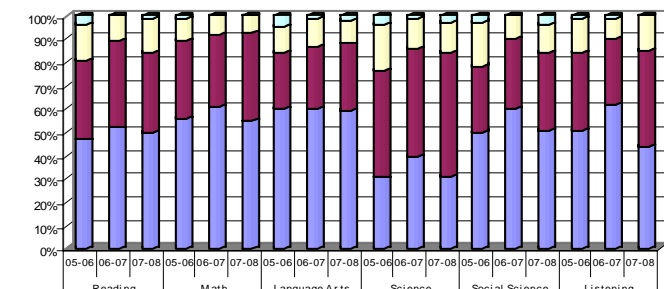
	Reading			Math			Language Arts			Science			Social Science			Listening		
Advance	2	1	2	1	0	1	0	2	1	3	2	2	1	1	1	1	0	2
Proficient	14	12	12	5	5	9	7	9	6	31	24	26	3	2	4	9	8	6
Basic	38	38	39	43	38	38	37	23	28	40	49	49	36	28	24	31	35	39
Below Basic	46	48	47	51	57	53	56	66	64	26	25	23	60	68	71	59	57	54

Performance Levels for Grade 1



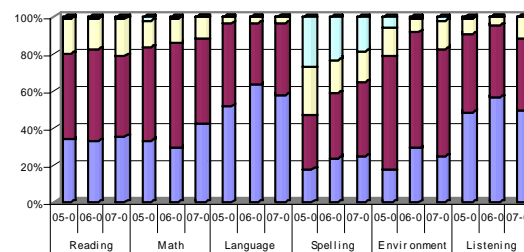
	Reading			Math			Language Arts			Spelling			Environment			Listening		
Advance	9	5	6	4	0	1	1	2	0	29	24	31	2	1	3	3	3	1
Proficient	48	41	44	32	23	24	3	5	5	23	17	25	15	13	20	12	16	12
Basic	30	42	34	51	55	62	60	65	62	28	38	27	71	74	67	53	47	46
Below Basic	14	13	16	12	21	13	36	29	33	20	20	17	12	12	12	31	34	42

Performance Levels for Grade 4



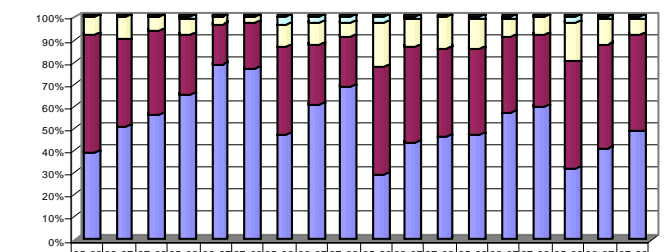
	Reading			Math			Language Arts			Science			Social Science			Listening		
Advance	4	0	1	1	0	0	5	1	2	4	1	3	3	0	4	1	1	0
Proficient	15	11	15	10	8	7	11	12	10	20	13	13	19	10	12	15	9	15
Basic	34	37	34	33	31	38	24	27	29	46	46	53	28	30	34	33	28	41
Below Basic	47	52	50	56	61	55	60	60	59	31	40	31	50	60	51	51	62	44

Performance Levels for Grade 2



	Reading			Math			Language Arts			Spelling			Environment			Listening		
Advance	1	1	1	2	1	0	0	0	0	27	23	18	6	1	2	1	0	0
Proficient	19	16	20	14	13	12	3	3	3	26	18	17	15	7	15	8	4	12
Basic	47	50	44	50	57	46	45	34	39	29	35	40	61	62	58	42	39	38
Below Basic	34	33	36	33	29	42	52	64	58	18	24	25	17	29	25	49	56	50

Performance Levels for Grade 5



	Reading			Math			Language Arts			Science			Social Science			Listening		
Advance	0	0	0	1	0	0	3	2	2	2	1	0	1	1	0	2	1	1
Proficient	8	10	6	7	3	2	10	10	7	20	12	14	13	8	8	18	11	7
Basic	53	39	38	27	18	21	40	27	22	49	43	40	39	34	32	48	47	44
Below Basic	39	51	56	66	79	77	47	60	69	29	43	46	47	58	59	32	41	49