

School PTO & Administration SY 2007 - 2008

Parent-Teacher Organization Officers	
Dave Taitano	President
Cynthia Sablan	Vice President
Debra Antenorucz	Secretary
Stephanie Jimenez	Treasurer
School Administration	
Carla Dulay	Principal
Rebecca Perez	Assistant Principal

P.L. 26-26 School Performance Grade Classification

School Year 2007-2008 School Performance

Based on Public Law 28-45

SAT10 Proficient & Advanced Levels	School Data	P.L. 26-26 Grade Classification
SAT10 Grade 1 - Reading	64%	Satisfactory
SAT10 Grade 1 - Math	37%	Low
SAT10 Grade 1 - Language	28%	Low
SAT10 Grade 2 - Reading	23%	Low
SAT10 Grade 2 - Math	26%	Low
SAT10 Grade 2 - Language	3%	Unacceptable
SAT10 Grade 3 - Reading	22%	Low
SAT10 Grade 3 - Math	32%	Low
SAT10 Grade 3 - Language	19%	Low
SAT10 Grade 4 - Reading	29%	Low
SAT10 Grade 4 - Math	36%	Low
SAT10 Grade 4 - Language	20%	Low
SAT10 Grade 5 - Reading	28%	Low
SAT10 Grade 5 - Math	26%	Low
SAT10 Grade 5 - Language	36%	Low
School Passing Rate	100%	Exceptional
5th Grade Promotion Rate	100%	Exceptional
Student Attendance Rate	94%	Exceptional
Student Discipline Rate	0%	Exceptional
Employee Attendance Rate	91%	Satisfactory
School Improvement Plan	100%	
COMPOSITE SCORE/GRADE	60%	Satisfactory

School Initiatives & Exemplary Programs That Impact Student Achievement

SPECIAL PROGRAMS

- DEED
- ESL Program
- Special Education
- GATE Program
- Pre-GATE
- Corrective Reading Program - Success For All (SFA)
- Chamorro Program (PL 21-34 mandate)
- Teacher Mentoring Program
- Summer School 2007
- Virtues Program (Character Education)
- Peer Mediation Program (conflict resolution)
- I-Recycle Program-Aluminum Cans
- Box Tops for Education
- Newsletter Buzzette
- GATE Newsletter—Tutujan

EXEMPLARY ACCOMPLISHMENTS

- SAT 10: Top Percentile Ranking district-wide in 21 categories.
- SAT 10: Scored above the district average in all content areas in all grades.
- SAT 10: Scored above the 50th National Percentile Ranking for Grades 1-5 in Spelling
Grade 4 in Math, Science, Social Science
- School Partnership with community, business, military and government agencies
- HATSA Mini-Grant (handheld computers)

EXTRA-CURRICULAR ACTIVITIES

- Rainbows for all Children
- Jump Rope for Heart
- International Peace Day
- United Nations Day
- Red Ribbon Week

SPECIAL AWARDS

- Quarterly Honor Roll Recognition
- SAT 10 STAR Awards



WEEKLY SCHOOL BULLETIN

"Bumblebees Buzz"

SCHOOL ANNUAL REPORT CARD SY 2007 - 2008

GUAM PUBLIC SCHOOL SYSTEM **AGANA HEIGHTS** **ELEMENTARY SCHOOL**

Telephone..... 477-8040/60 /477-5798
Fax..... 477-8041



“HOME OF THE BUMBLE BEES”

Color: Blue & Gold
Located in Agana Heights, Guam

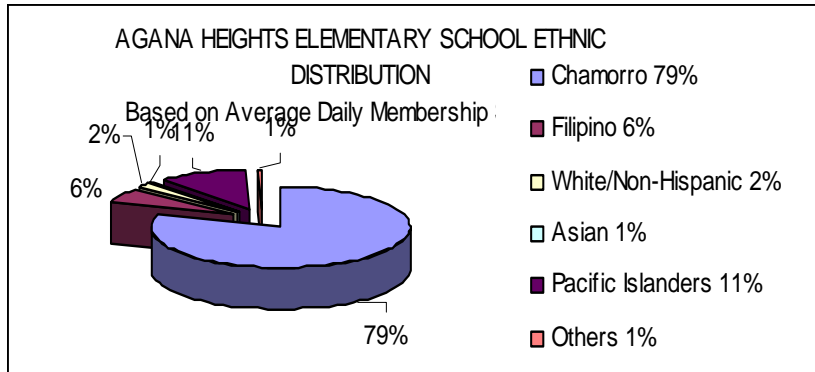
MISSION:

“Assure that all students are granted the fullest possible educational opportunities
Heighten the students’ concerns and awareness of themselves and others
Encourage students to strive for excellence and be productive citizens
Strive for school, home, and community partnerships”

School Year 2007-2008 Student Enrollment by Grade

Based on September 30, 2007 Official Student Enrollment

Grade Level	Enrollment	Percentage
1st Grade	96	20%
2nd Grade	99	20%
3rd Grade	108	22%
4th Grade	89	18%
5th Grade	81	17%
Total:	473	100%



Average Daily Attendance Rate		
Average Daily Attendance (ADA)		512.8
Average Daily Membership (ADM)		546.4
Attendance Rate		93.9%
Student Participating in Free/Reduced Lunch		
Based on October 2007 from Food & Nutrition Services		
Free	209	39%
Reduced	13	2.4%
Total	222	41.4%

Human Resources

Based on Data from FSAIS on September 2008

Position	No. of Employees	% of Total	Attendance Rate	Absentee Rate
Principals and Assistants	3	5%	87%	13%
Teachers	37	66%	94%	6%
Professional/Ancillary	3	5%	81%	19%
Support	13	23%	84%	16%
Total	56	100%	91%	9%

FY 2008 Actual Expenditures

Category	Amount	Percent
Salaries and Benefits	2,749,919.78	90%
Contractual Services	74,760.06	2%
Supplies and Materials	9,879.90	0%
Equipment	0.00	0%
Utilities	223,729.93	7%
Capital Outlay	0.00	0%
Total	3,058,289.67	100%

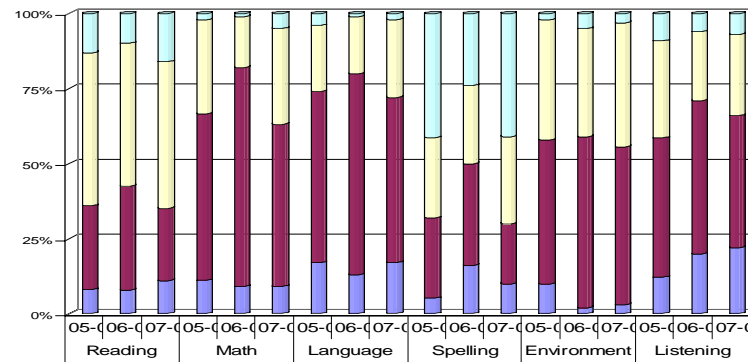
GUAM PUBLIC LAW 13-101. "The Board shall evaluate the efficiency of the instructional program in contributing to the achievement of the basic skills and shall continually revise both outcome statements and instructional procedures on the basis of evaluative data.

The GPSS Comprehensive Testing Program (CTP) is comprised of a variety of measures of student achievement including teacher-made tests, the Stanford Achievement Test (SAT10), and other standardized tests selected by the school. The SAT10 is administered district-wide to students enrolled in Grades 1-12. The graphs in the next section show SY 05-06 to SY 07-08 SAT 10 results for reading, math, language, environment/science, and social science.

SCORE DEFINITIONS

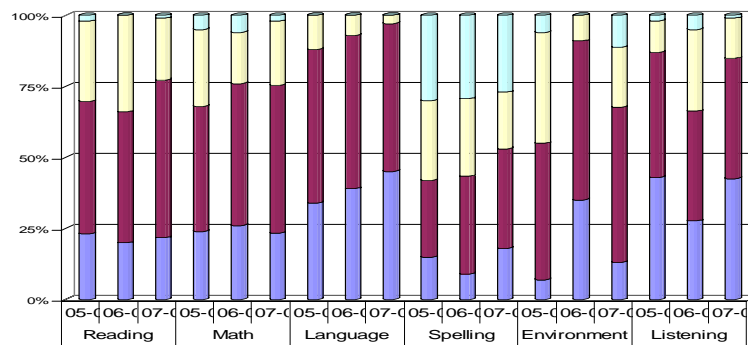
Advanced	Signifies superior performance beyond grade level mastery.
Proficient	Represents solid academic performance , indicating that students are prepared for the next grade.
Basic	Indicates partial mastery of the knowledge and skills that are fundamental for satisfactory work.
Below Basic	Indicates little or no mastery of fundamental knowledge and skills.

Performance Level—Grade 1st



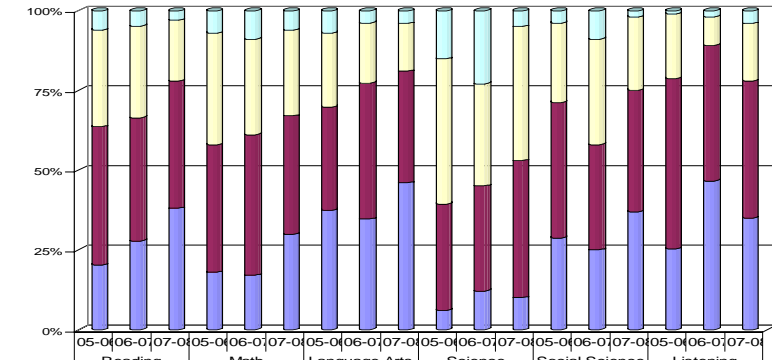
Advance	13	10	16	2	1	5	4	1	2	40	24	41	2	5	3	9	6	7
Proficient	51	48	49	32	22	19	26	26	29	40	36	41	32	23	27	32	23	27
Basic	28	35	24	55	73	54	57	67	55	26	34	20	48	57	52	46	51	44
Below Basic	8	8	11	11	9	9	17	13	17	5	16	10	10	2	3	12	20	22

Performance Level—Grade 2nd



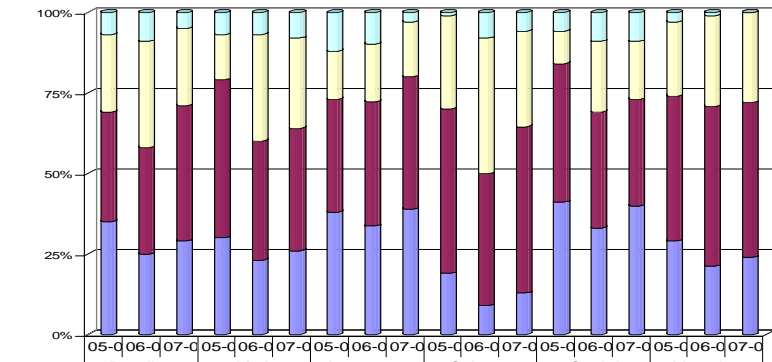
Advance	2	0	1	5	6	2	0	0	30	29	27	6	0	11	2	5	1	
Proficient	28	34	22	27	18	22	12	7	3	28	27	20	39	9	21	11	29	14
Basic	46	46	56	44	50	51	54	52	27	34	35	48	56	54	44	39	42	
Below Basic	23	20	22	24	26	23	34	39	45	15	9	18	7	35	13	43	28	42

Performance Level—Grade 3rd



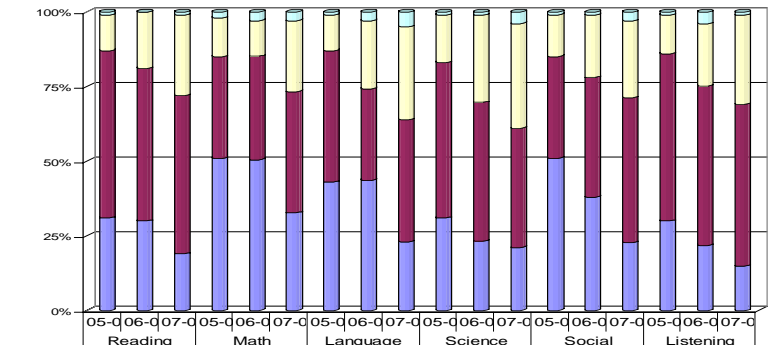
Advance	6	5	3	7	9	6	7	4	4	15	23	5	4	9	2	1	2	4
Proficient	30	29	19	35	30	27	23	19	15	45	32	42	25	33	23	20	9	18
Basic	43	39	40	40	44	37	32	43	35	33	33	43	43	33	38	53	43	43
Below Basic	20	28	38	18	17	30	37	35	46	6	12	10	29	25	37	25	47	35

Performance Level—Grade 4th



Advance	7	9	5	7	7	8	12	10	3	1	8	6	6	9	9	3	1	0
Proficient	24	33	24	14	33	28	15	18	17	29	42	30	10	22	18	23	28	28
Basic	34	33	42	49	37	38	35	39	41	51	41	51	43	36	33	45	49	48
Below Basic	35	25	29	30	23	26	38	34	39	19	9	13	41	33	40	29	21	24

Performance Level—Grade 5th



Advance	1	0	1	2	3	3	1	3	5	1	1	4	1	1	3	1	4	1
Proficient	12	19	27	13	12	24	12	23	31	16	29	35	14	21	26	13	21	30
Basic	56	51	53	34	35	41	44	31	41	52	46	40	34	40	49	56	54	54
Below Basic	31	30	19	51	51	33	43	44	23	31	23	21	51	38	23	30	22	15